



## 2001 Commonwealth

Suite 207, Ann Arbor, MI

2001 Commonwealth Boulevard is a three-story brick office facility with a full glass atrium entrance. The building's contemporary architecture and lush landscaping provide modern executive offices in Plymouth Park, the heart of Ann Arbor's research corridor.

Located off Plymouth Road in northeast Ann Arbor, ½ mile from US-23, walking distance to Sweetwaters Coffee and Anytime Fitness, and an easy commute from metropolitan Detroit. Over 325,000 SF in eight buildings make up Plymouth Park.

**Contact us for a tour and additional information. (734) 994-5050  
firstmartin@firstmartin.com**

WE ARE HERE.

### Features

- Operable Windows
- Ample Parking
- On Site Management
- Well Capitalized Owner

### Space Available

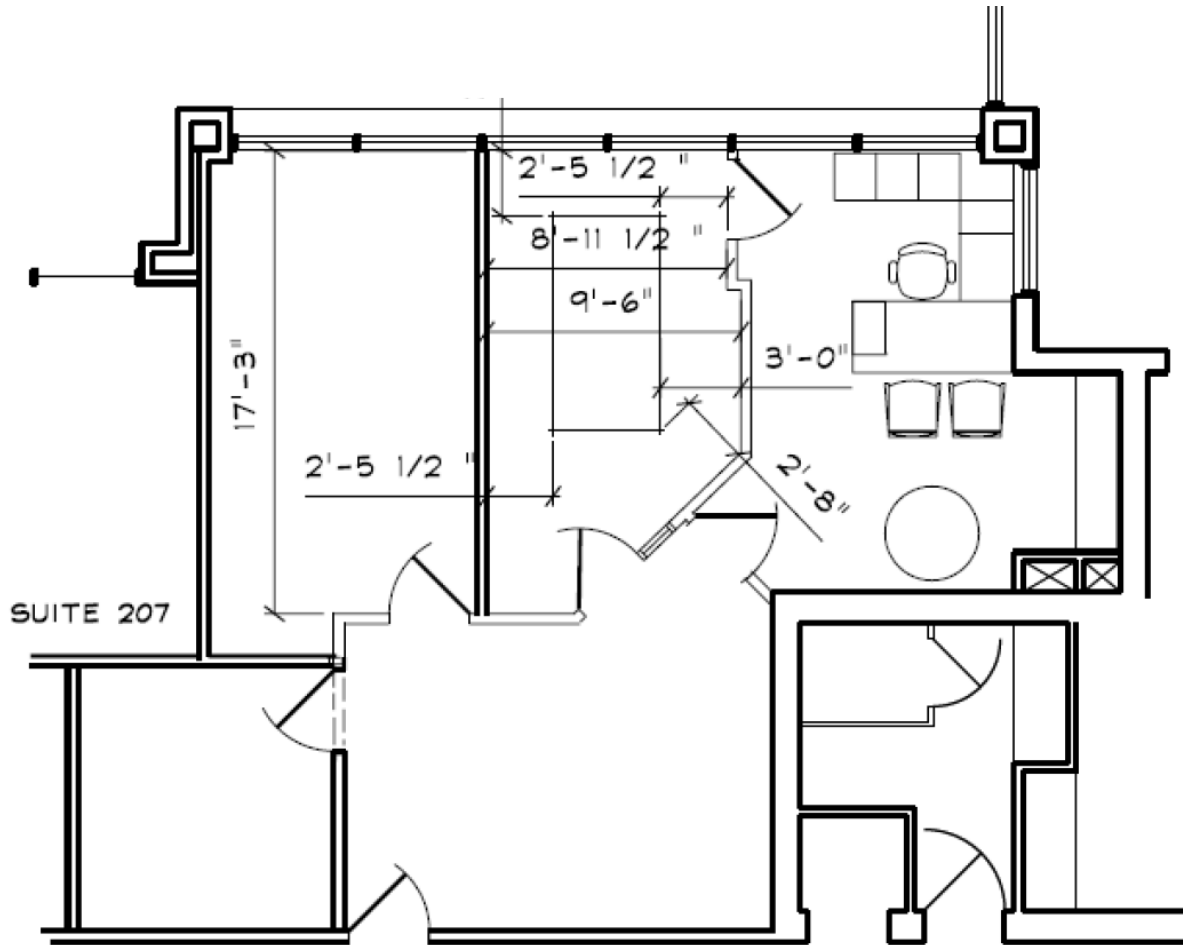
- 988 RSF/875 USF

### Plymouth Park Amenities

- Pickleball Court
- Pond Seating and Picnic Area with Outdoor WiFi

### Area Amenities

- Anytime Fitness
- Sweetwaters Coffee & Tea
- Plum Market
- CVS
- Busch's Fresh Food Market
- BeWon Korean
- Zamaan Café
- Mark's Midtown Coney Island
- United States Postal Service
- The UPS Store



**2001 Commonwealth, Suite 207**

WE ARE  
HERE.

First Martin is a full-service commercial real estate firm with an approach focusing on both the big picture and the small details, helping Ann Arbor remain vibrant. We invest in our relationships, balancing a decades-long view of real estate development with service in minutes.

Get in touch today to explore our portfolio of available commercial properties. Visit us at [firstmartin.com](http://firstmartin.com) to view all properties.